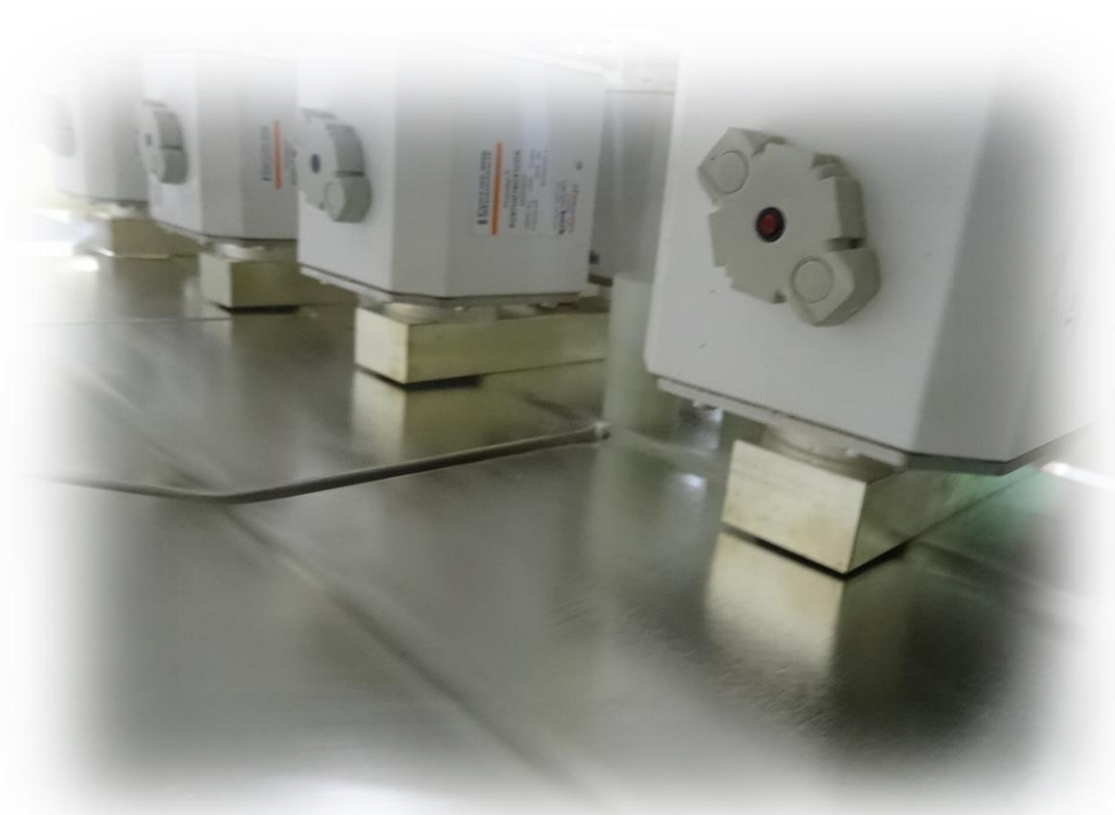




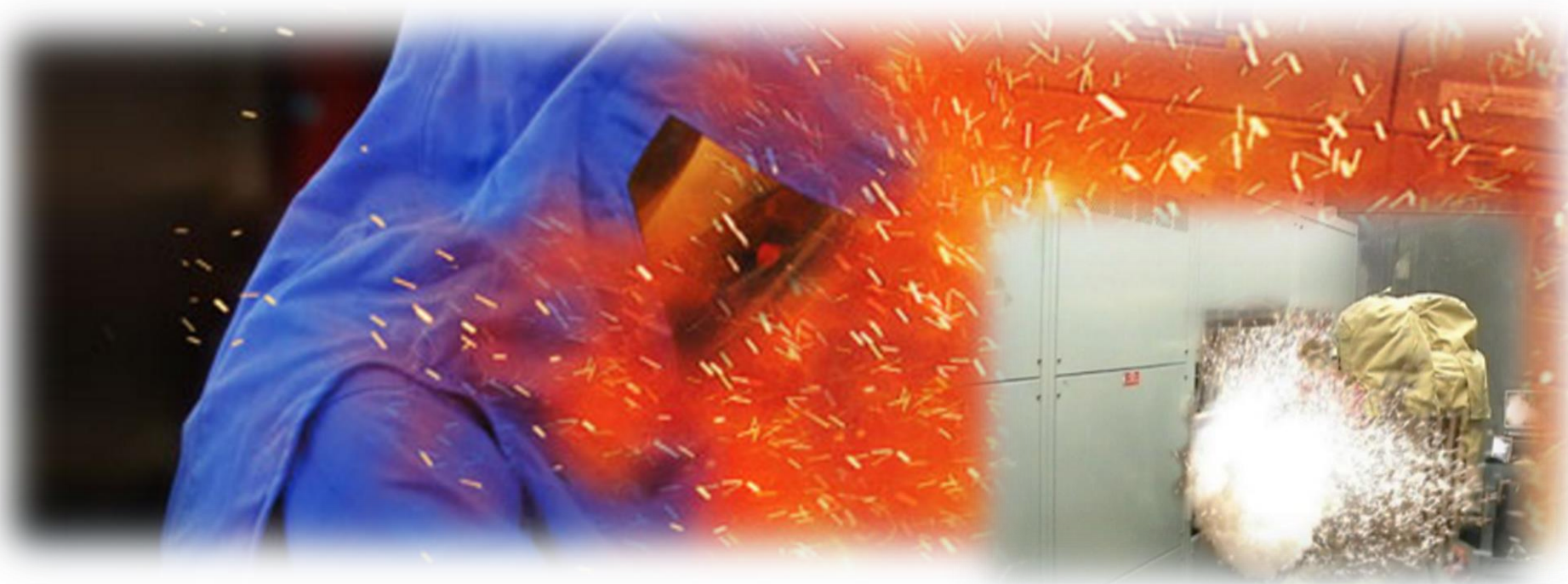
# FUSE ADVANTAGES

## EDUPACK TRAINING MODULE

2012



# SAFETY

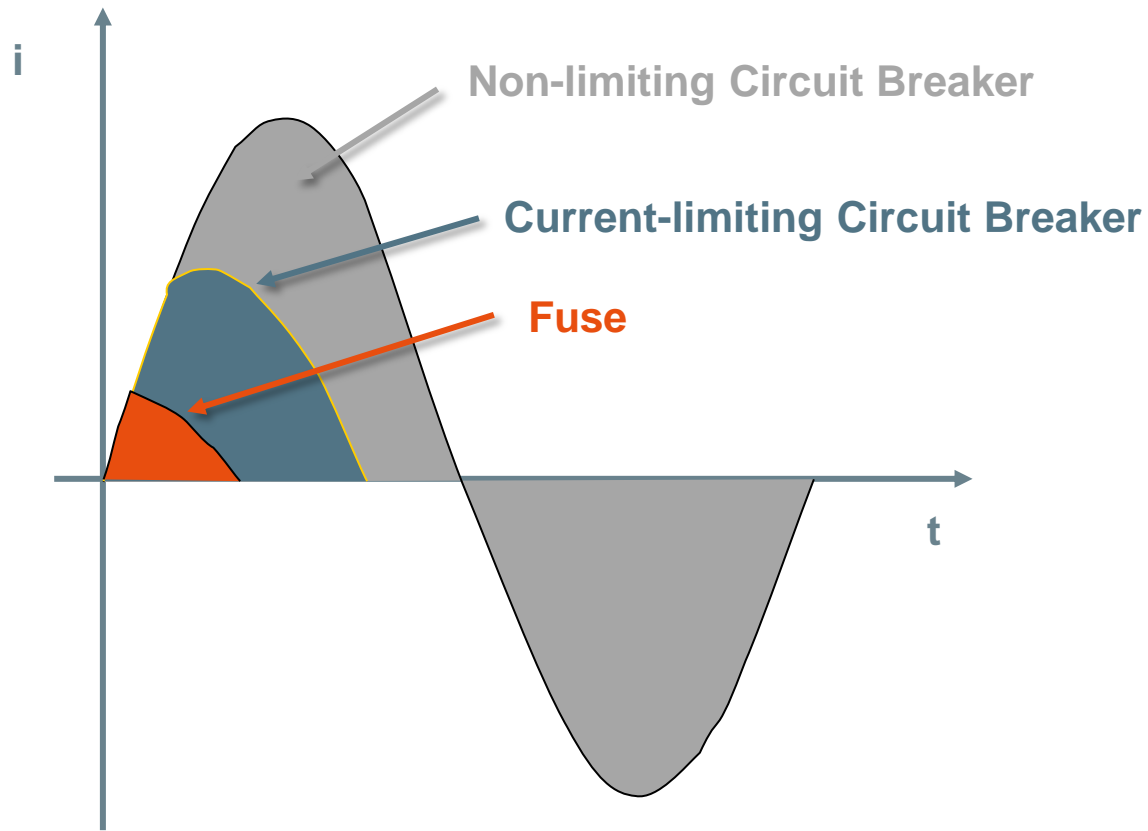


**Metallic elements inside the fuse melt directly upon the fault current**

**Arc extinction totally enclosed**

**The arc flash energy is drastically reduced when the peak current is limited by a fuse**

# SPEED - PEAK-LET-THRU CURRENT



# BREAKING CAPACITY

**100,000A 200,000A...**

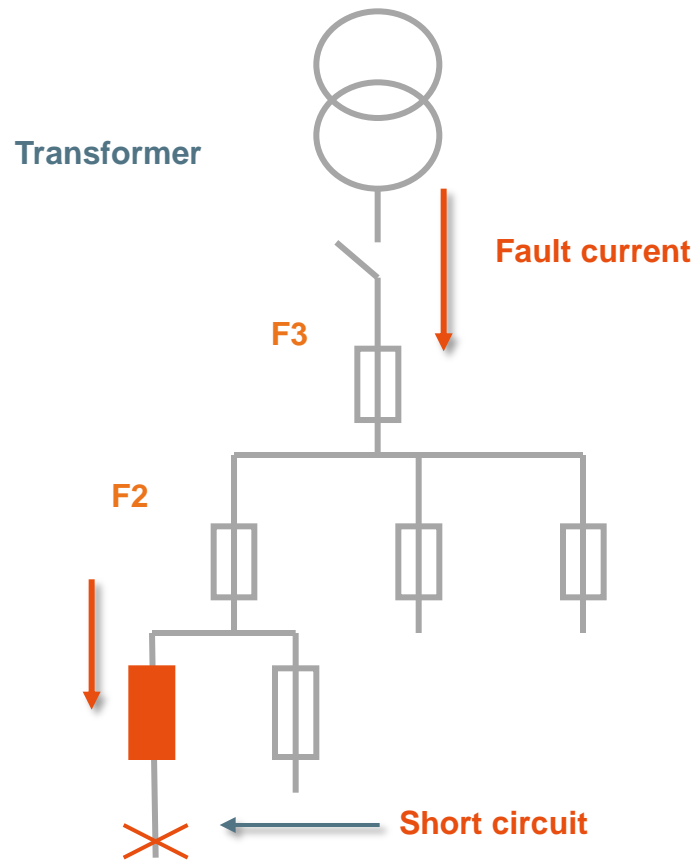
**and even 300,000A!**

# QUASI MAINTENANCE FREE

**No maintenance before a short circuit**

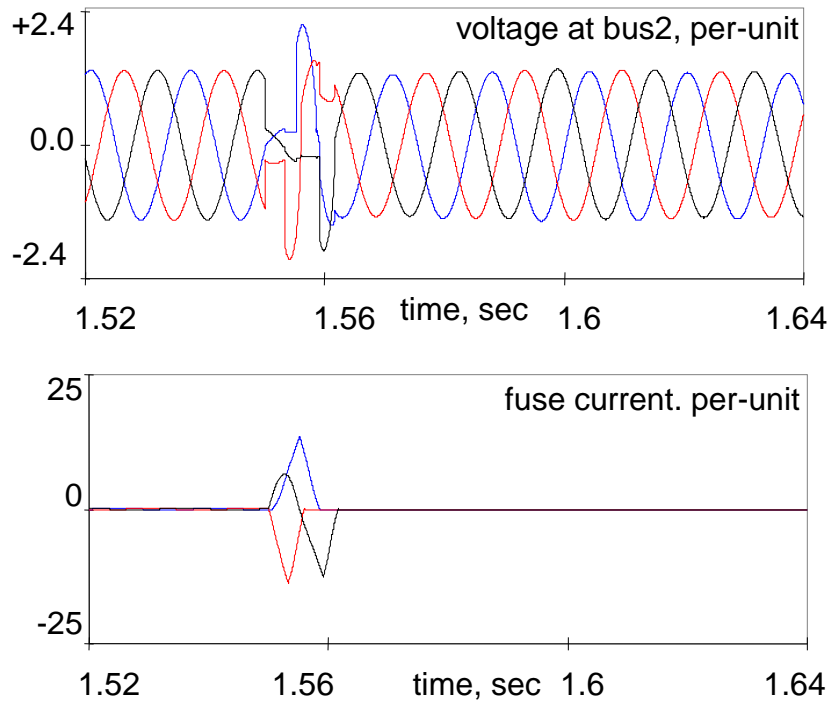
**Maintenance after a short circuit = simplicity**

# SELECTIVITY (DISCRIMINATION)

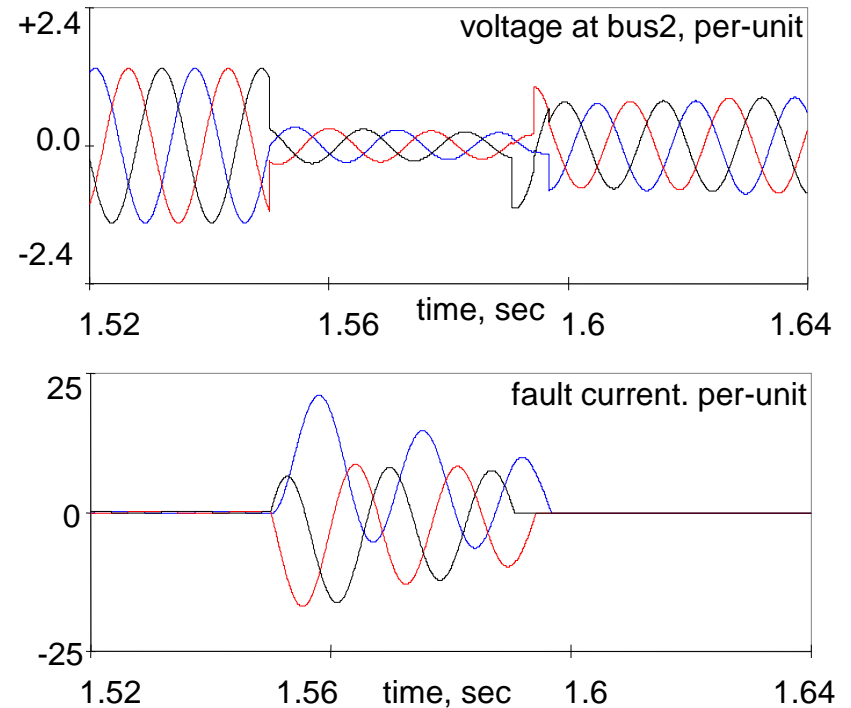


# POWER QUALITY

### Transients in system protected by current-limiting fuses



### Transients in system protected by non current-limiting devices



# FUTURE SYSTEM GROWTH

---

**Fuses generally still comply owing to their initial large breaking capacities**

**Adding fuses upgrade the breaking capacity of the protection system**



# LOW POWER LOSS

Cylindrical Fuse	Power loss in Modulostar® fuse holder	Circuit Breaker
32A gG or aM Size 10x38 mm	3W	3.2W
50A gG or aM Size 14x51 mm	5W	5W
125A aM Size 22x58 mm	9.5W	14W



# RELIABILITY

---

**Simplicity of the fuse concept**

# UNIVERSALITY

---

## Fuses can protect:

- Cables
- Transformers
- Motor circuits
- Capacitors
- Contactors
- Old circuit breakers
- Power electronic equipments

# PRICE

---

**The most economical protection**  
The most economical protection

# FUSE



**F**ull overcurrent protection, **F**idelity of operation

**U**niversal use of Time-Delay fuse (ideal all-purpose fuse)

**S**electivity, **S**implicity, **S**afety

**E**conomical, **E**nergy limiting, **E**asy to use



**MeRSEn**  
*Expertise, our source of energy*