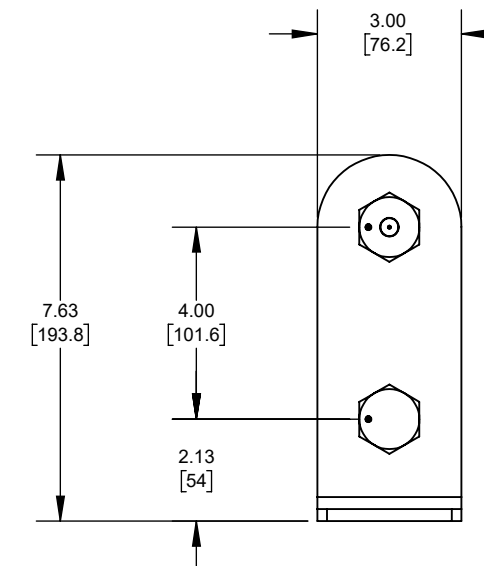
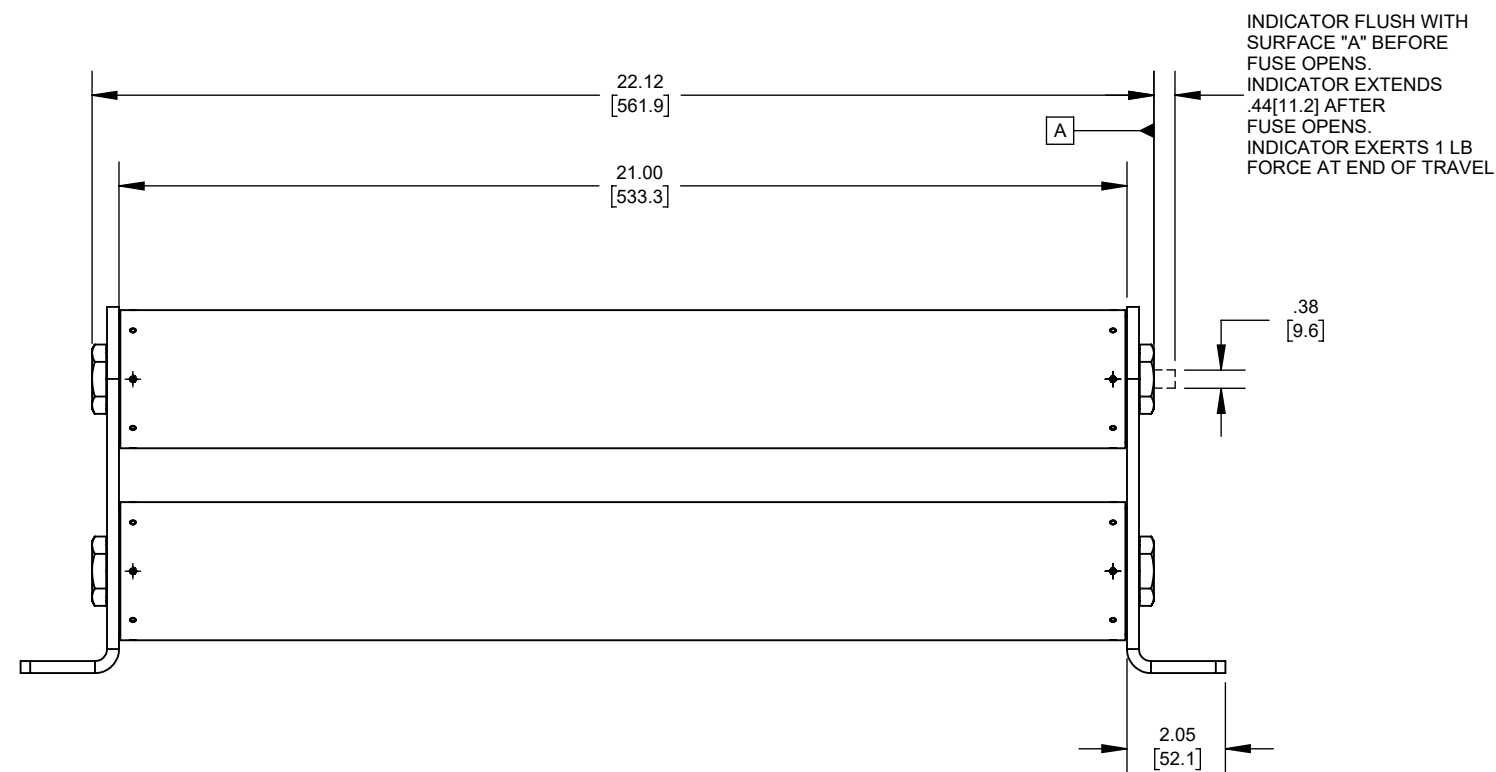
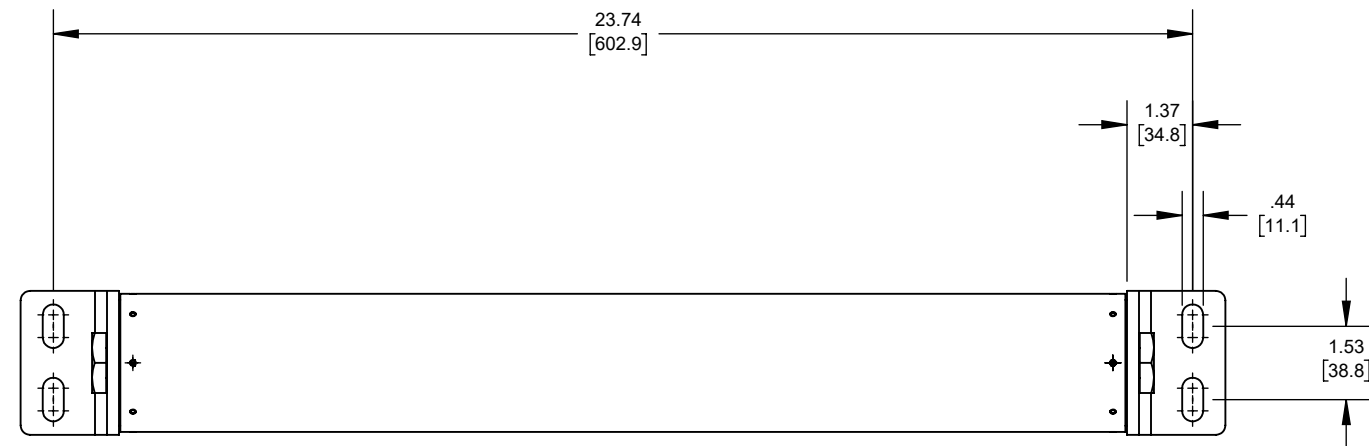


REV.	DATE	ECO	DESCRIPTION	BY	CK	APP
-	3/17/2003	N/A	PRELIMINARY	KMH	N/A	N/A
B	10/30/2023	17857	REDRAWN FROM CADRA, UPDATED SCALE, .44[11.2] WAS .50(12.7mm) AND 1 LB WAS 2 LBS	LA	N/A	SEE ECO



OUTLINE DIMENSIONS  
NOT TO BE USED FOR PRODUCTION

DIMENSIONS IN [ ]  
ARE MILLIMETERS

Approval stage / Etat d'approbation: <b>APPROUVÉ POUR FABRICATION / APPROVED FOR MANUFACTURING</b>		Product Class:/ Product Type: <b>MV E-RATED BOLT-IN FUSE AMP-TRAP</b>	
Initial ECO / ECO intiale: <b>ECO-17857-000</b>		Product amp rating:/ Voltage rating: <b>250-400E 7.2kV</b>	
Draw by / Dessiné par: <b>Luis ARMENTA</b>	Date: <b>11/14/2023</b>	Title / Titre: <b>OUTLINE A072B2D0R0-(250-400)E</b>	Weight : Masse :
Checked by / Vérifié par: <b>Yadyra Fang</b>	Date: <b>11/14/2023</b>	Drawing / de dessin: <b>700924</b>	Rev : Rév : <b>B</b>
Electrical Power 374 MERRIMAC STREET NEWBURYPORT, MA 01950	Éch / Scale : <b>1:4</b> Format / Size : <b>B</b>	Part / Article: <b>SEE TABLE</b>	Page : <b>1/1</b>

CATALOG NUMBER	RATING
A072B2D0R0-400E	400E
A072B2D0R0-350E	350E
A072B2D0R0-300E	300E
A072B2D0R0-250E	250E

Ce plan strictement confidentiel est la propriété exclusive de la société MERSEN sans l'autorisation écrite de laquelle il ne peut être ni reproduit, ni copié, ni communiqué à des tiers.  
This drawing and specifications there on is property of MERSEN and shall not be reproduced or copied or used in whole or in part as the base for manufacture or sale of item without written permission.

