

# Fuse Bases for DIN High Voltage Fuse-links

FUSE HOLDERS, FUSE BASES AND SUPPORTS

IEC HV FUSE SUPPORTS



## FEATURES & BENEFITS

- For indoor and outdoor use

## STANDARDS

- IEC 60282-1

Fuse bases for DIN high voltage fuse-links with diameter 45mm and lengths 192, 292, 367, 442 and 537mm.

The indicating device enables electrical actuating of the opening mechanism for a circuit or triggering of an indicator during the melting of a fuse equipped with a trip-indicator.

This very robust and original device means freedom for any mechanical system and offers the advantage of being able to incorporate a microswitch unit or units according to the equipment configuration.

## TECHNICAL DATA OVERVIEW

Rated Voltage	7.2kV / 12kV / 17.5kV / 24kV / 36kV
Body Material	Base plate: galvanized steel Terminal lug: nickel-plated copper Screws: galvanized steel Clip: nickel-plated copper Clip spring: Stainless steel Insulators: epoxy resin or porcelain
Rated current $I_n$	200 A

# Fuse Bases for DIN High Voltage Fuse-links

## PRODUCT RANGE



SI72V192

### Fuse Holder

Catalog number	Item number	Rated voltage AC (IEC)	Dielectric withstand between live parts and earth (50 Hz - 1 min)	Dielectric withstand between live parts and earth (1,2/50µs)	Package	Weight
<b>Indoor</b>						
SI72V192	G209421	7.2 kV	20 kV	60 kV	1	4 kg
SI120V292	H209422	12 kV	28 kV	75 kV	1	5.3 kg
SI175V292	J209423	17.5 kV	38 kV	95 kV	1	5.7 kg
SI175V367	Q1001089	17.5 kV	38 kV	95 kV	1	6 kg
SI240V442	K209424	24 kV	50 kV	125 kV	1	6.3 kg
SI240V537	L209425	24 kV	50 kV	125 kV	1	7.2 kg
SI360V537	M209426	36 kV	70 kV	170 kV	1	7.5 kg
<b>Outdoor</b>						
SE120V292	S210328	12 kV	28 kV	75 kV	1	6.1 kg
SE175V292	T210329	17.5 kV	38 kV	95 kV	1	7.5 kg
SE175V367	V1001070	17.5 kV	38 kV	95 kV	1	10.1 kg
SE240V442	V210330	24 kV	50 kV	125 kV	1	12.5 kg
SE360V537	W210331	36 kV	70 kV	170 kV	1	14 kg

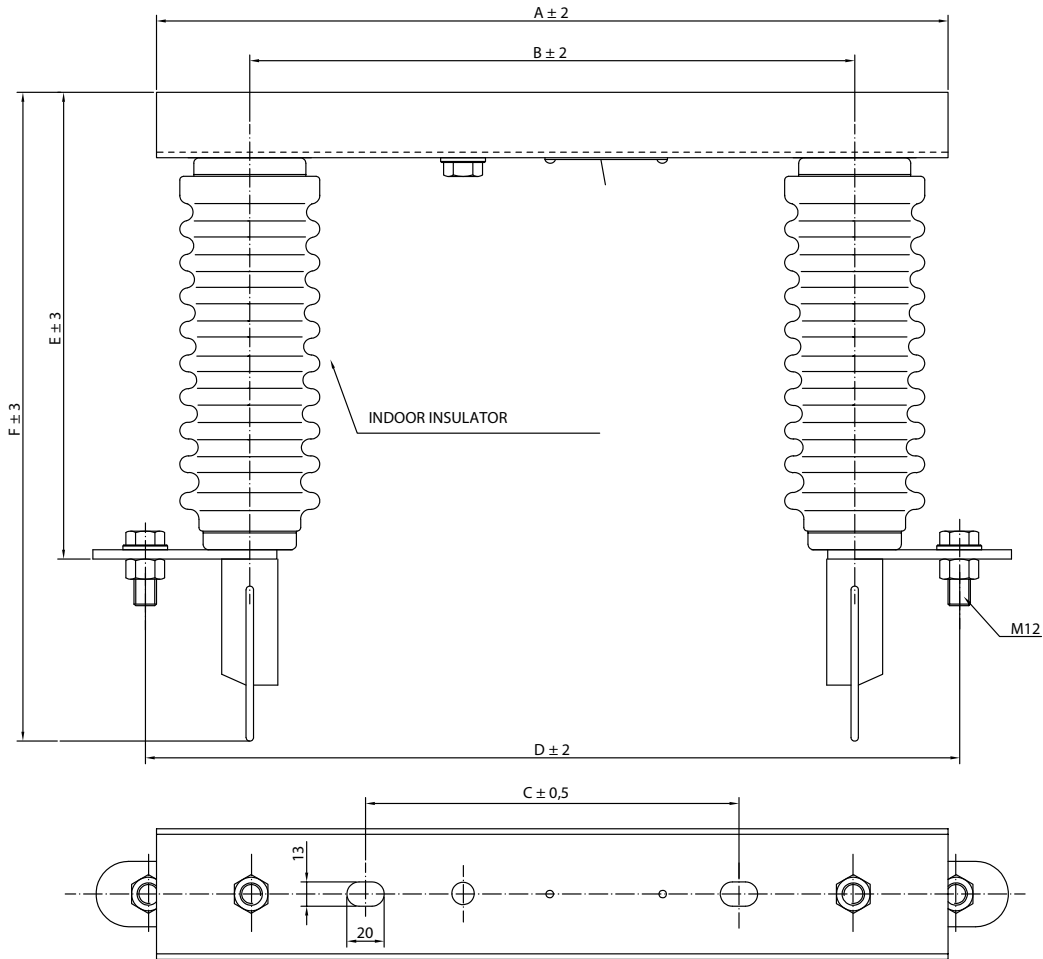
### Indicating Device

Catalog number	Item number	Rated voltage of corresponding fuse-holder	Indication System	Design	Length	Package	Weight
MC1-5NFLEXQS500	E092855	12-36kV	1 microswitch	Length flexible part: 550mm	710 mm	1	0.2 kg
MC1-9NFLEXQS500	F092856	12-36kV	2 microswitches	Length flexible part: 550mm	710 mm	1	0.2 kg

# Fuse Bases for DIN High Voltage Fuse-links

## DIMENSIONS

### SI DIN fuse-holder for indoor use



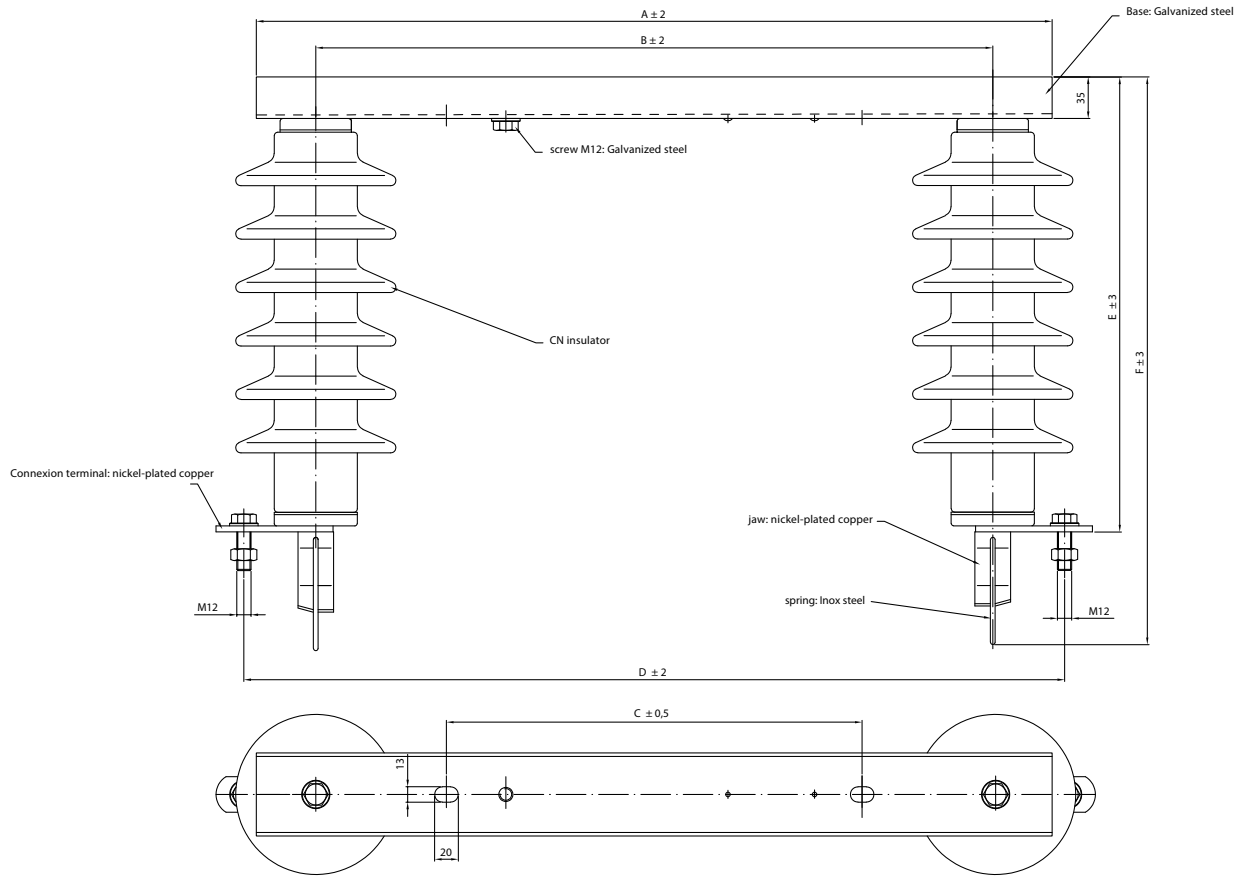
Article Number	Rated voltage	A	B	C	D	E	F
G209421	7,2 kV	400	226	322	347	175	270
H209422	12 kV	424	324	200	445	175	270
J209423	17,5 kV	424	324	200	445	220	315
K209424	24 kV	576	476	270	597	270	365
L209425	24 kV	670	570	350	691	270	365
M209426	36 kV	670	570	350	691	350	445
Q1001089	17,5 kV	576	401	270	522	220	315

Dimensions in mm

# Fuse Bases for DIN High Voltage Fuse-links

## DIMENSIONS

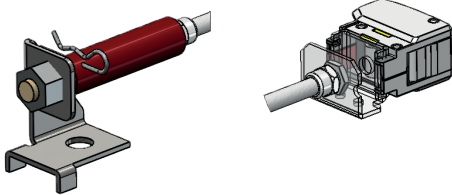
### SE DIN fuse-holder for outdoor use



Article Number	Rated voltage	A	B	C	D	E	F	Leakage path
S210328	12	424	324	200	445	261	357	375
T210329	17,5	424	324	200	445	261	356	375
V210330	24	576	476	270	597	309	404	475
W210331	36	670	470	350	691	381	476	620
V1001070	17,5	576	401	270	521	263	358	375

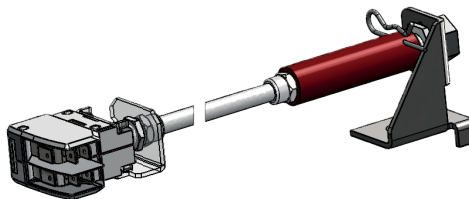
Dimensions in mm

### Indicator device - MC1-5NFLEXQS500



Dimensions in mm

### Indicator device - MC1-9NFLEXQS500



Dimensions in mm