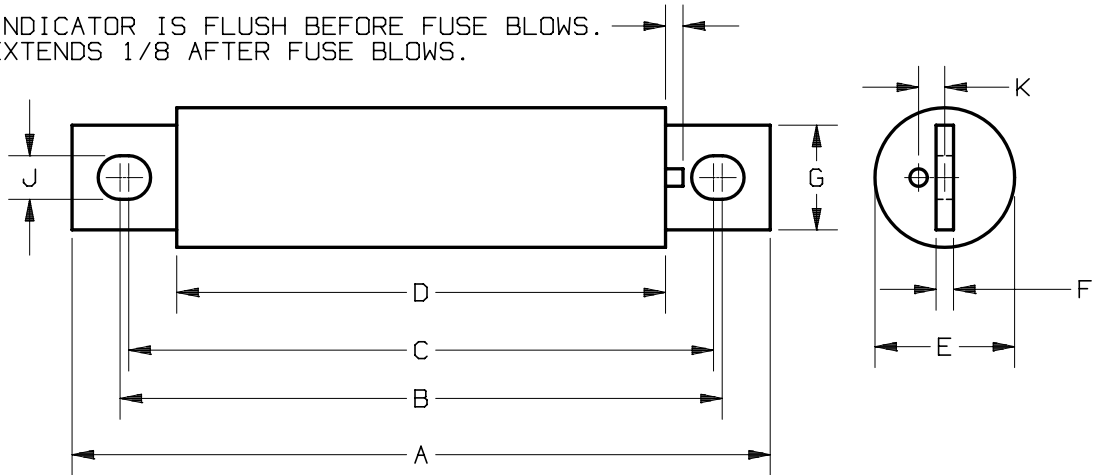


INDICATOR IS FLUSH BEFORE FUSE BLOWS.  
 EXTENDS 1/8 AFTER FUSE BLOWS.



AMP RATING	A	B	C	D	E	F	G	J	K
35-60	5	$4\frac{5}{16}$	$4\frac{3}{16}$	$3\frac{1}{2}$	1	$\frac{1}{8}$	$\frac{3}{4}$	$\frac{5}{16}$	$\frac{3}{16}$
65-100	5	$4\frac{5}{16}$	$4\frac{3}{16}$	$3\frac{1}{2}$	$1\frac{7}{32}$	$\frac{3}{16}$	1	$\frac{5}{16}$	$\frac{11}{32}$
110-200	$5\frac{23}{32}$	$4\frac{25}{32}$	$4\frac{5}{32}$	$3\frac{15}{32}$	$1\frac{1}{2}$	$\frac{1}{4}$	1	$\frac{13}{32}$	$\frac{15}{32}$
225-400	$5\frac{23}{32}$	$4\frac{25}{32}$	$4\frac{5}{32}$	$3\frac{15}{32}$	2	$\frac{1}{4}$	$1\frac{1}{2}$	$\frac{13}{32}$	$\frac{21}{32}$
450-600	$7\frac{23}{32}$	5.91	5.53	$3\frac{15}{32}$	$2\frac{1}{2}$	$\frac{3}{8}$	2	$\frac{17}{32}$	$\frac{13}{16}$



GOULD INC.  
 GOULD SHAWMUT DIV.  
 374 MERRIMAC STREET  
 NEWBURYPORT, MA 01950

FORM 101 1000V

A100P(35-600)-4TI

OUTLINE DIMENSIONS  
 NOT TO BE USED FOR PRODUCTION

24253

DRAWN:  SIGN

CHKD:

DATE: 4/10/91

DATE: