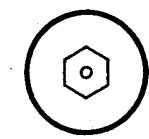
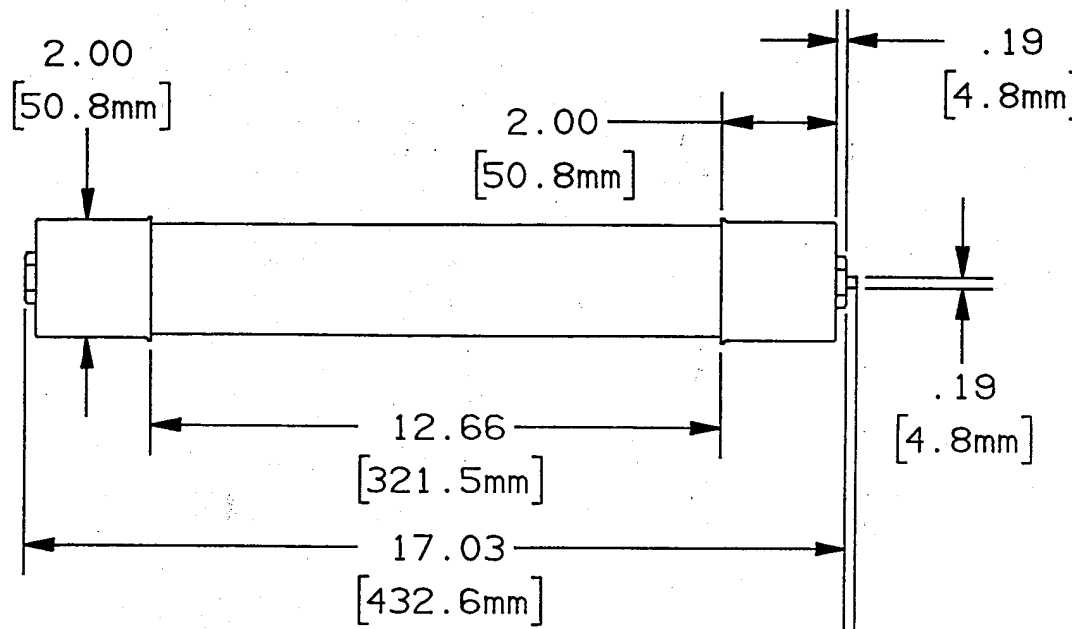


24390



SURFACE "A"

INDICATOR FLUSH WITH SURFACE "A" BEFORE FUSE OPENS.
 INDICATOR EXTENDS .19in(4.8mm) AFTER FUSE OPENS.
 INDICATOR EXERTS 1 LB FORCE AT END OF TRAVEL

RATING	CATALOG NO.
5E	A155F1C0R0-5E
7E	A155F1C0R0-7E
10E	A155F1C0R0-10E
15E	A155F1C0R0-15E
20E	A155F1C0R0-20E
25E	A155F1C0R0-25E
30E	A155F1C0R0-30E

GOULD 374 MERRIMAC STREET
 NEWBURYPORT, MA 01950

PRODUCT MANAGER
 SIGN: *H. Cline*
 DATE: 5/18/93

DESIGN ENGINEER
 SIGN: *L. O'Shields*
 DATE: 1/29/93

MEDIUM VOLTAGE AMP-TRAP
 E-RATED GENERAL PURPOSE
 CURRENT LIMITING FUSE
 CS-3 SERIES, 5E TO 30E, 15.5KV MAX

OUTLINE DIMENSIONS
 NOT TO BE USED FOR PRODUCTION

24390