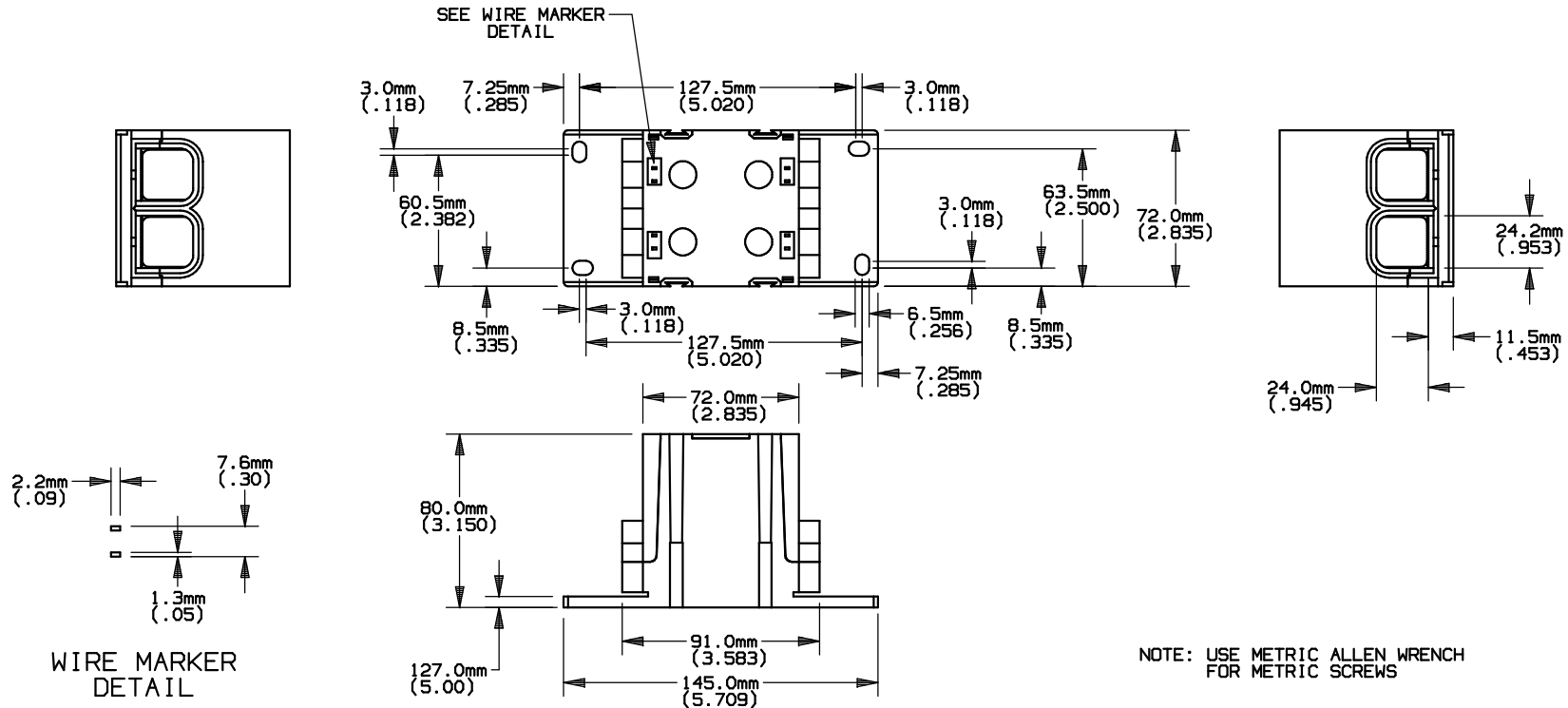


REV	DATE	ECO	DESCRIPTION	BY	CK	APP
A	4/17/12	N/A	AMP RATINGS WERE 420	GDR	N/A	N/A



WIRE MARKER DETAIL

P/N	CONN. MAT'L.	AMP RATING	LINE				LOAD				UL		CSA	
			RANGE	TORQUE	RANGE	TORQUE	RANGE	TORQUE	RANGE	TORQUE	FILE #	GUIDE #	FILE #	CLASS
			AWG/kcmil	in/lbs	mm ²	N-m	AWG/kcmil	in/lbs	mm ²	N-m				
FSPDB5A	AL	840	600-#4	600-500 310 400-00 220	300-25	300-240 35.1 185-70 24.9	600-#4	600-500 310 400-00 220	300-25	300-240 35.1 185-70 24.9	E73571	XCFR2	69363	6228
FSPDB5C	Cu	840	600-#4	600-500 310 400-00 220 0-#2 170 #3-#4 130	300-25	300-240 35.1 185-70 24.9 50-35 19.2 25 14.7	600-#4	600-500 310 400-00 220 0-#2 170 #3-#4 130	300-25	300-240 35.1 185-70 24.9 50-35 19.2 25 14.7	E73571	XCFR2	69363	6228



MERSEN USA NEWBURYPORT-MA, LLC
374 MERRIMAC STREET
NEWBURYPORT, MA 01950

FINGER-SAFE
POWER DISTRIBUTION BLOCK
600V

OUTLINE DIMENSIONS
NOT TO BE USED FOR PRODUCTION

PRODUCT MANAGER

DESIGN ENGINEER

SIGN:

SIGN:

DATE:

DATE:

(2)600-#4 X (2)600-#4
(2)300-25mm² X (2)300-25mm²

701005