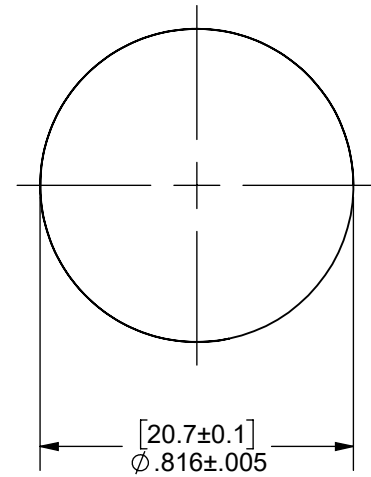
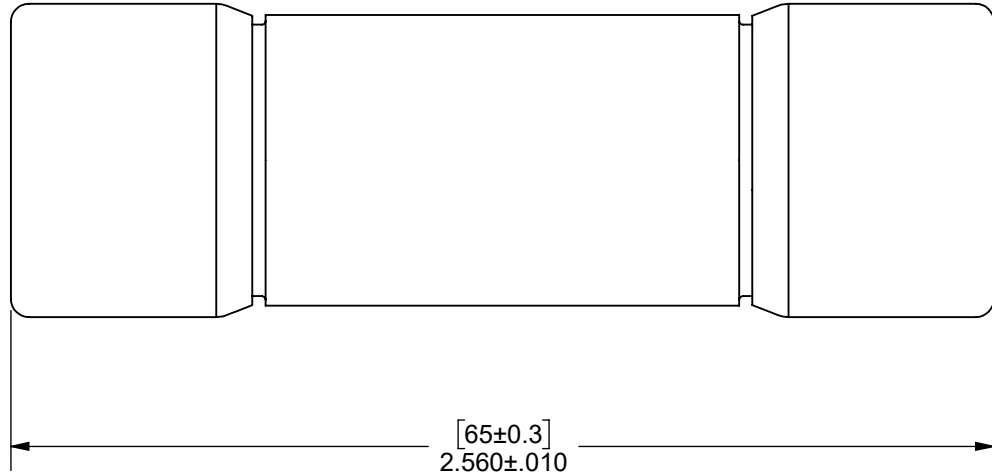


REV.	DATE	ECO	DESCRIPTION	BY	CK	APP
A	2/13/2023	17339	INITIAL RELEASE	MAR	N/A	SEE ECO
B	11/2/2023	17923	ADDED HP15P63, REMOVED HP15P4 THRU HP15P8 & HP15P70 THRU HP15P80	ABT	N/A	SEE ECO



OUTLINE DIMENSIONS
NOT TO BE USED FOR PRODUCTION

DIMENSIONS IN []
ARE MILLIMETERS

HP15P65
HP15P63
HP15P60
HP15P55
HP15P50
HP15P45
HP15P40
HP15P35
HP15P32
HP15P30
HP15P25
HP15P20
HP15P15
HP15P12
HP15P10
CATALOG NUMBER

Approval stage / Etat d'approbation: APPROUVÉ POUR FABRICATION / APPROVED FOR MANUFACTURING	Product Class: / Product Type: PHOTOVOLTAIC FUSE, gPV PV FUSE	Product amp rating: / Voltage rating: 10 - 65A 1500VDC
Initial ECO / ECO intiale: ECO-17339-000	Title / Titre: OUTLINE HP15P(10-65)	Weight : Masse :
Draw by / Dessiné par: Alma Balcazar	Date : 5/29/2024	
Checked by / Vérifié par: Luis ARMENTA	Date : 5/29/2024	
Electrical Power 374 MERRIMAC STREET NEWBURYPORT, MA 01950	Éch / Scale : 2:1 Format / Size : A	Part / Article: SEE TABLE
Page : 1/1		MERSEN

Ce plan strictement confidentiel est la propriété exclusive de la société MERSEN sans l'autorisation écrite de laquelle il ne peut être ni reproduit, ni copié, ni communiqué à des tiers.
This drawing and specifications there on is property of MERSEN and shall not be reproduced or copied or used in whole or in part as the base for manufacture or sale of item without written permission.