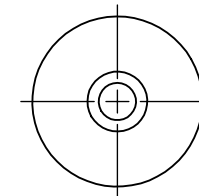
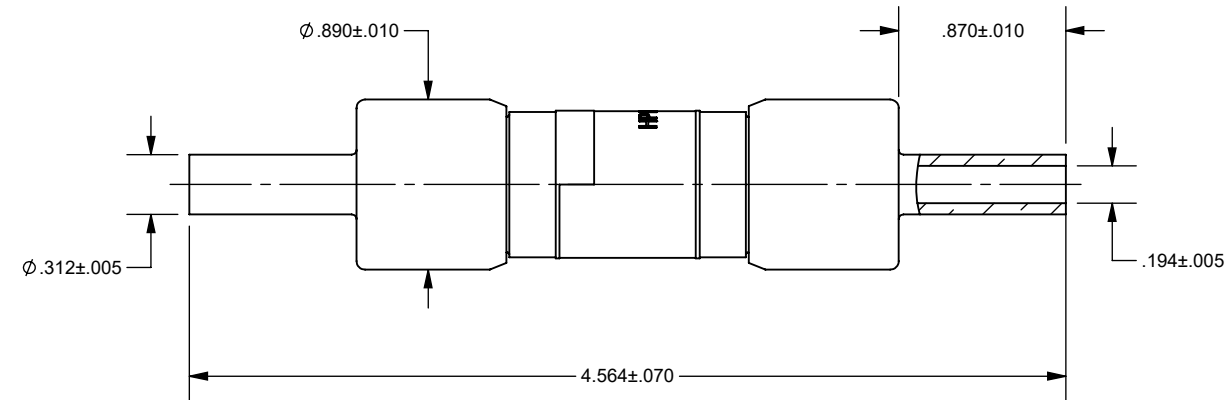
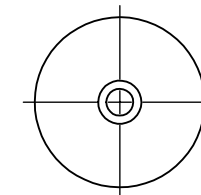
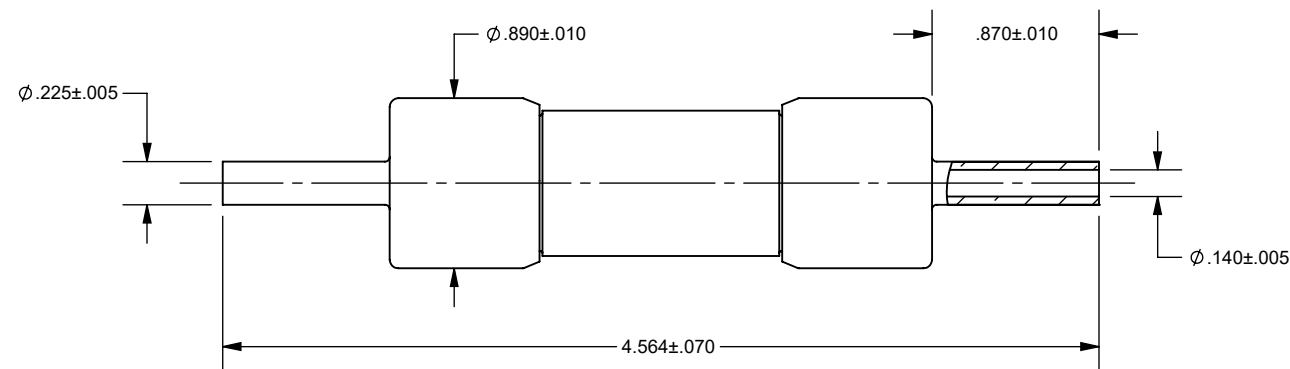


REV.	DATE	ECO	DESCRIPTION	BY	CK	APP
A	2/13/2023	17339	INITIAL RELEASE	MAR	N/A	SEE ECO
B	6/15/2023	17620	REMOVED 1 AWG VIEWS, ADDED 6-8 AWG VIEWS, UPDATED -013 THRU 022 WIRE GAGE	YF	N/A	SEE ECO
C	11/2/2023	17923	ADDED HP15P63CC, REMOVED HP15P4CC THRU HP15P8CC & HP15P70CC THRU HP15P80CC	ABT	N/A	SEE ECO



6-8 AWG



10-12 AWG

OUTLINE DIMENSIONS
NOT TO BE USED FOR PRODUCTION DIMENSIONS IN [] ARE MILLIMETERS

HP15P65CC	6-8 AWG
HP15P63CC	6-8 AWG
HP15P60CC	6-8 AWG
HP15P55CC	6-8 AWG
HP15P50CC	6-8 AWG
HP15P45CC	6-8 AWG
HP15P40CC	6-8 AWG
HP15P35CC	10-12 AWG
HP15P32CC	10-12 AWG
HP15P30CC	10-12 AWG
HP15P25CC	10-12 AWG
HP15P20CC	10-12 AWG
HP15P15CC	10-12 AWG
HP15P12CC	10-12 AWG
HP15P10CC	10-12 AWG
CATALOG NUMBER	WIRE GAGE

Approval stage / Etat d'approbation: APPROUVÉ POUR FABRICATION / APPROVED FOR MANUFACTURING	Product Class:/ Product Type: PHOTOVOLTAIC FUSE, gPV PV FUSE	Product amp rating:/ Voltage rating: 10 - 65A 1500VDC	Weight / Masse:
Initial ECO / ECO initiale: ECO-17339-000	Title / Titre: OUTLINE HP15P(10-65)CC		
Draw by / Dessiné par: Alma Balcazar	Date: 5/29/2024	Drawing / de dessin: OUT-242153	Rev / Rév: C
Checked by / Vérifié par: Luis ARMENTA	Date: 5/29/2024	Part / Article: SEE TABLE	Page: 1/1
Electrical Power 374 MERRIMAC STREET NEWBURYPORT, MA 01950	Éch / Scale: 1:1 Format / Size: B		

Ce plan strictement confidentiel est la propriété exclusive de la société MERSEN sans l'autorisation écrite de laquelle il ne peut être ni reproduit, ni copié, ni communiqué à des tiers.
This drawing and specifications there on is property of MERSEN and shall not be reproduced or copied or used in whole or in part as the base for manufacture or sale of item without written permission.